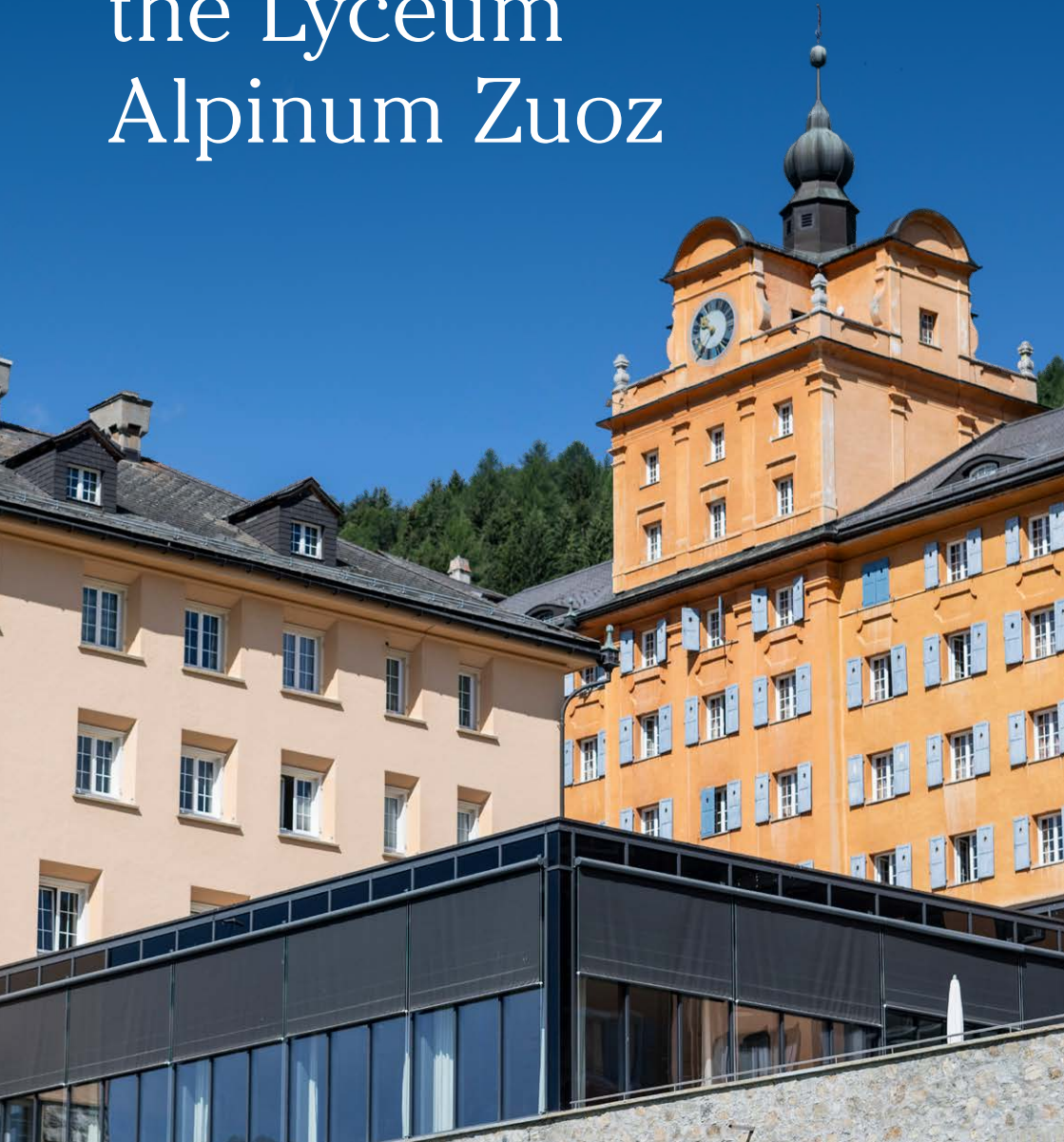


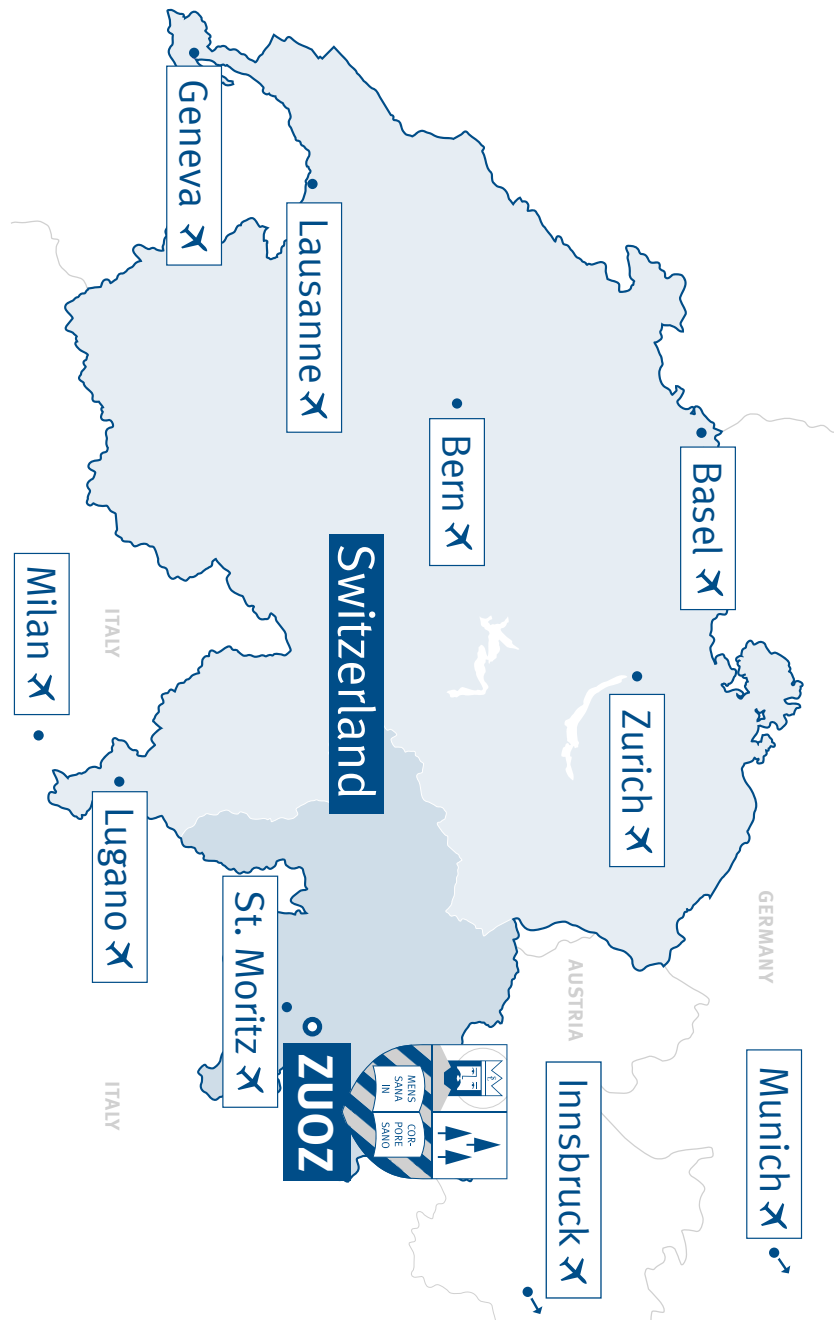


Lyceum Alpinum Zuoz
SWISS INTERNATIONAL BOARDING SCHOOL

Feel the Spirit of the Lyceum Alpinum Zuoz



Our School



The Lyceum Alpinum Zuoz, founded in 1904, is a Swiss international boarding school set in spectacular alpine landscape near St. Moritz, Switzerland. The Lyceum campus occupies an extensive site with its own sports fields overlooking the picturesque village of Zuoz.

In 2024, the school celebrated its 120th anniversary. The school philosophy is founded on respect for tradition, combined with innovation. It finds expression in the Spirit of Zuoz, which attaches supreme importance to **Tolerance, Mutual Respect, Fair Play, Commitment** and **Life-long Learning**.

Respectability and orderliness in everyday life, respect and helpfulness towards others coupled with an open-minded attitude: these are the guiding principles of an education at the Lyceum Alpinum Zuoz, and they equip ambitious and enthusiastic young people with the qualities they need for life.

“Mens sana in corpore sano”

Our Values

Students engage in enquiry and concept-based learning based on curiosity and creative thinking. Our expert teachers instil confidence in every student's individual potential and talents, encouraging them to reach **academic excellence**.

Through a wide range of extra-curricular programmes and community services our students develop a sense of personal responsibility and leadership skills. They are supported in their **personal growth** by a caring community and become open-minded, respectful and empathic young people.

Our culturally diverse yet close-knit student community fosters a sense of belonging, where everyone feels valued and shares the school's **community spirit**. Students develop appreciation of arts, nature, healthy living and forge friendships for life.



Facts & Figures

7 – 12

Grades

15 – 20

Average class size
(subject to department)

100 %

University enrolment rate

20 km

Distance to St. Moritz

350 km

of ski slopes

~50

Nationalities

1:4

Staff-student ratio

220

Boarding students

120

Day students

340

Total students

Sports Fields

- 6 Tennis courts
- 3 Football pitches
- 3 Basketball courts
- Beach volleyball court
- 7 Eton Fives courts
- Cricket field
- Golf course (18 holes)
- Fitness studio
- Yoga/dance studio
- Indoor sportshall
- Ice hockey rink (winter)
- Ice rink (winter)

Theatre

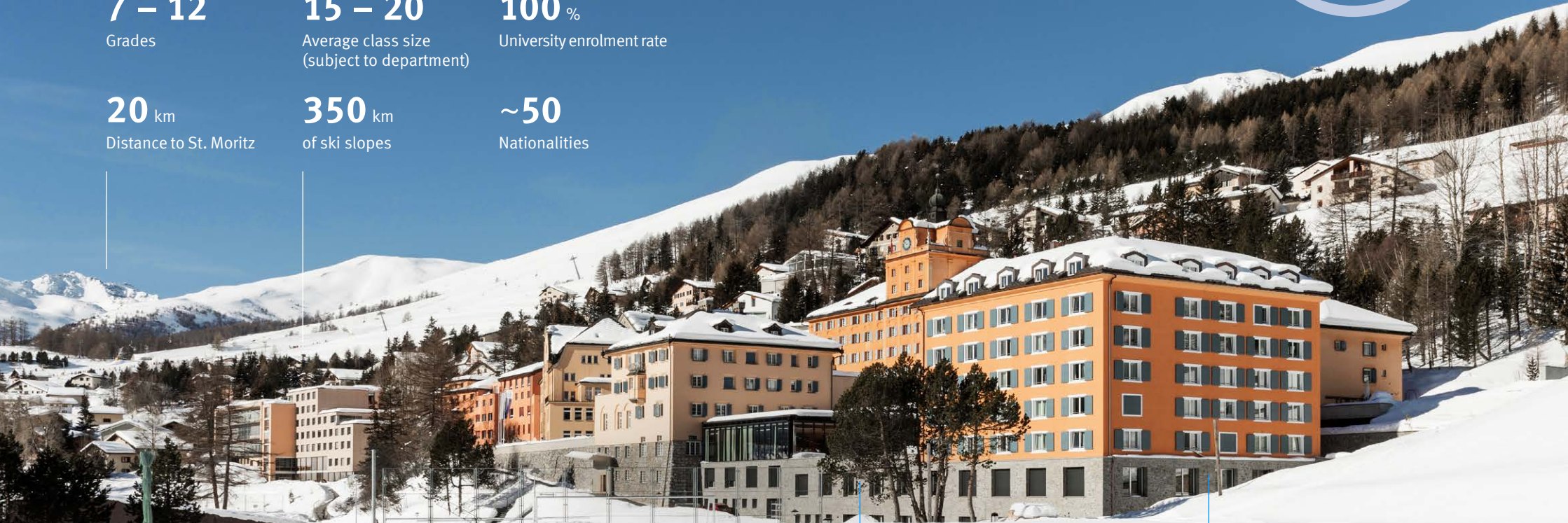
Zuoz Globe with 100 seats

130,000 m²

Campus Size

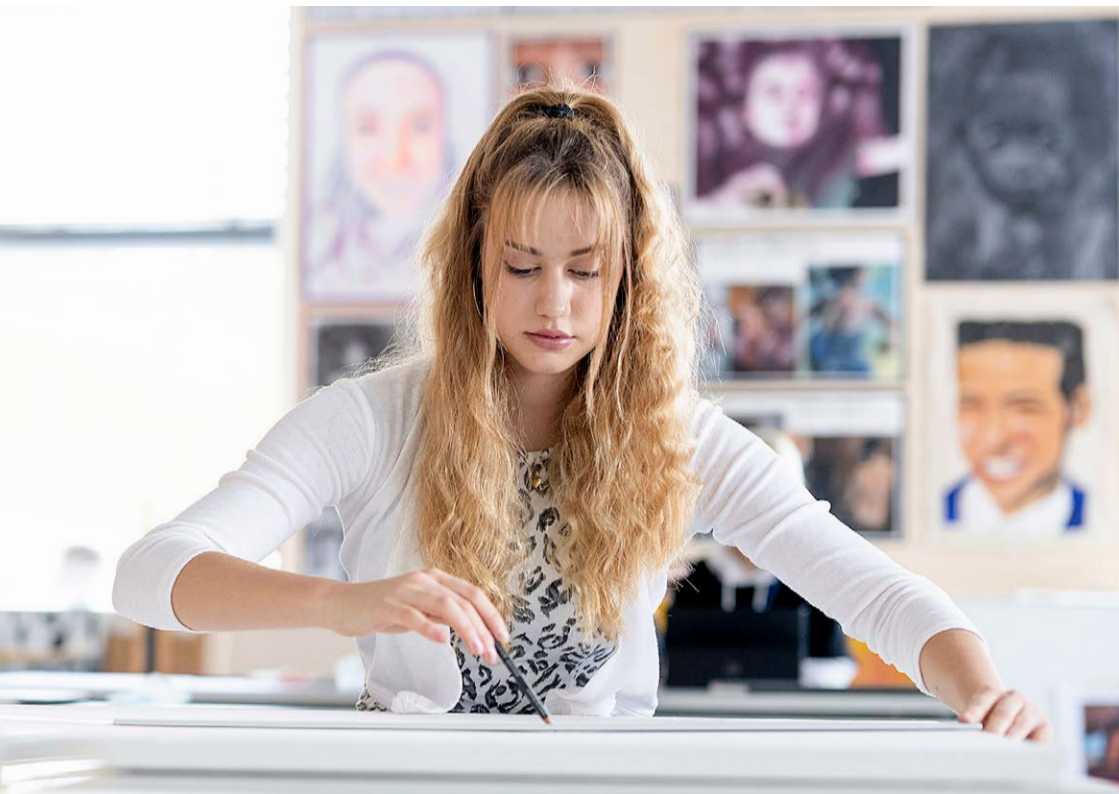
Arts & Music

with exhibition space



Academic Programmes

Our IB World School is the academic home for students from close to 50 nations including the local region. Our boarding and day students are prepared for their higher education entrance qualification exams in either our International Department or our Swiss Matura.



International Department (English)

Grades	Programmes
12	IBDP
11	
10	IGCSE
9	
8	PRE-IGCSE
7	

Swiss Matura (German or bilingual German/English)

Grades	Programmes		
12	Bilingual Matura	German Matura	← transition ↗
11			
10	Swiss Matura (German, Grades 7-12)	German Intensive Year (Grades 7-10)	← transition
9			← transition
8			← transition
7			← transition



Theatre, Music and Arts

The Arts at Lyceum Alpinum Zuoz have many faces. Students are encouraged to experiment, discover and develop their talents in drama (theatre and film), visual arts and music (in groups or individual) beyond classroom lessons.





Sports is Key

Mens sana in corpore sano — Sports and games not only promote personal fitness, they also strengthen team spirit and support mutual respect as well as fairplay. Sports and Games at Lyceum Alpinum Zuoz therefore are an integral part of our students' daily routine. Options are seasonally varied and include

Badminton Basketball Climbing **Cricket**
Fitness Football **Golf** Ice Hockey Horse Riding
Kickboxing Martial Arts Mountain Biking Fives
Skiing Snowboarding Tennis Volleyball Yoga
Athletics Cycling Uni-Hockey **Swimming**
Tennis Kite Surfing **Rugby** Trampolining
Trail Running The Lake Club Cross-Country Skiing
Sailing Karate Dancing Games Croquet

College Counselling

The Lyceum Alpinum Zuoz has a unique and diverse student body. Every year, our graduates go on to study at colleges or universities in places all over the world, including Switzerland, Germany, the Netherlands, Spain, the United Kingdom, the United States, Canada and Australia. Together with the boarding house staff and teachers, our university counsellors help students to make the right choice for their future.

The process begins in 10th grade (I4/M4) when students choose their subjects for the crucial final two years with the help of a Morrisby profile assessment. They can also begin preparation for university entrance exams such as SAT, IELTS, LNAT, UCAT and others. In 11th grade contact with our counsellors intensifies as students begin choosing their next path of study at university. Over the summer, they start work on their college essays, prepare for interviews and generally start the application process.

The most important point to remember is that it's not about finding the best university, but about finding the best fit.





Student Wellbeing

Throughout your child's time at Lyceum Alpinum, they are supported by an extensive network of staff who are responsible for their emotional and physical wellbeing. The core pastoral team at the Lyceum Alpinum comprises the boarding houses, the health centre, school counsellor, our safeguarding and child protection team, as well key senior staff who have oversight of the care of all our students.

We believe in addressing key issues head-on, through informal discussions, talks and workshops, to provide our students with all the tools they need to make well-informed decisions. Targeted sessions with the school counsellor or a member of the pastoral team provide students with valuable strategies and advice on how to tackle some of their most common challenges.

'Mood Check' submissions on our students personal 'Orah' app (our boarding student engagement platform) allow them to take direct ownership of their emotional wellbeing. Through this app, our students also have access to a wealth of resources and support. Student mood checks are monitored by our teams in the houses so that early intervention can be offered to students if they have expressed signs that they might be finding things difficult.

German Intensive Year

Passport to the Swiss Matura

Ski Academy

Take your skiing passion
to a professional level



INFORMATION & REGISTRATION



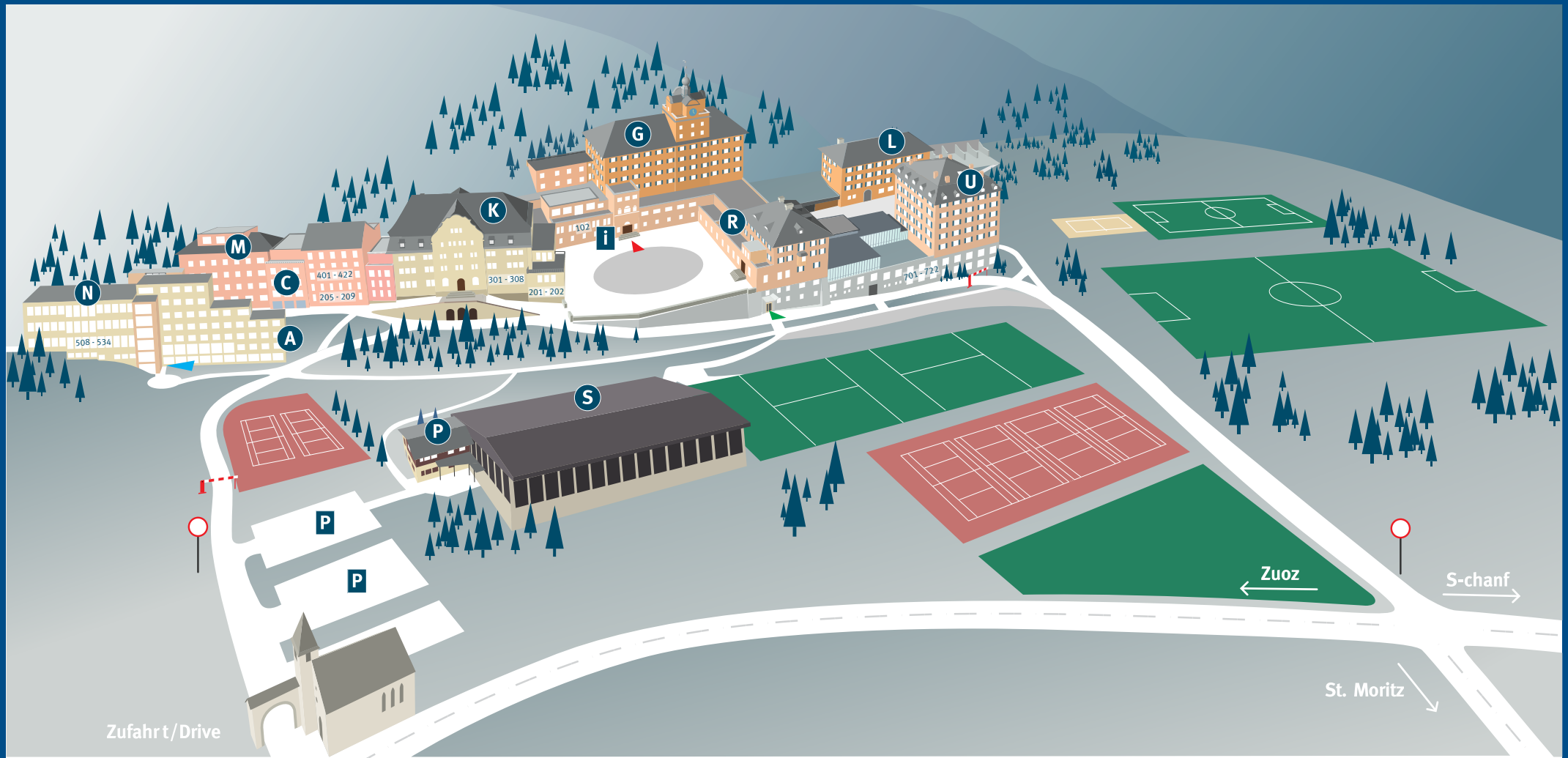
+41 81 851 31 00
admission@lyceum-alpinum.ch
www.lyceum-alpinum.ch/german-intensive



INFORMATION & REGISTRATION



+41 81 851 31 00
admission@lyceum-alpinum.ch
www.lyceum-alpinum.ch/ski-academy





**BESUCHERANMELDUNG/
VISITOR REGISTRATION**


ZUOZ GLOBE


SCOULA DE LA PLAIV

A CHESA ARPIGLIA
 Senior Girls' Boarding House 10 – 12
 Scoula da La Plaiv (unterer Eingang)

C CHESA CRATA
 Junior Girls' Boarding House 7 – 9

G GROSSHAUS
 Senior Boys' Boarding House 10 – 12
 Reception
 Rektorat/Head of School's Office
 Schulsekretariat/School Office
 DIS Office
Classrooms: 102

K KLEINHAUS
 Senior Boys' Boarding House 10 – 12
Classrooms: 201 – 202 / 301 – 308

L LÄRCHENHAUS
 Personal/Staff
 Unterhalt/Maintenance

M MITTELHAUS
 Junior Boys' Boarding House 7 – 9 (Spencer House)
 Mediathek/Media Centre
 School Shop
Classrooms: 205 – 209 / 401 – 422

N NADIGHAUS
 Naturwissenschaften/Sciences
Classrooms: 508 – 534

P GRUSAIDA
 Fitnessraum/Fitness Centre

R REKTORATSHAUS
 Admissions
 Learning Support
 Arvenzimmer/Conference Room
 Aula/Auditorium
 Speisesaal/Dining Hall
 Pflegeabteilung/Health Centre
 Zuoz Globe

S SPORTHALLE
 Sporthalle/Gym

U CHESA UREZZA
 Senior Girls' Boarding House 10 – 12
Classrooms: 701 – 722

Our Boarding Houses

**We have six boarding houses at Lyceum Alpinum:
Spencer House, Kleinhaus and Grosshaus for the boys, and
Chesa Crasta, Chesa Arpiglia and Chesa Urezza for the girls.**

Our houses provide a place for students to make connections across year groups and face the challenges of school life surrounded by supportive peers. Our core boarding values of Respect, Active Engagement and Personal Responsibility are reflected in all six houses, and these are crucial for successful coexistence in our community.

Each house also has a team of house and sport captains. These are representatives from the student body and are voted for by their peers. In their role they support the house parent team with the organisation of boarding school life and activities. They also represent the student body, advocating for others in the house and raising student ideas and initiatives to heads of houses and the head of boarding. The captains act as role models for others and encourage their fellow students to be actively involved in all that boarding life at the Lyceum Alpinum has to offer.

Typical Day



Breakfast
6:45 – 7:30



Assembly
7:30



Lessons
7:45 – 12:15



Lunch
12:15 – 13:00



Lessons, Games, Electives
13:15 – 17:00



Extra-curricular activities, Study time
17:00 – 18:30



Dinner
19:00 – 19:45



Extra-curricular activities, Study time
20:00 – 21:30



Bedtime
21:45 – 23:00



Grosshaus

Grosshaus, our largest house, takes its place at the centre of the school, overlooking the Rondell. A dominating presence in the Lyceum Alpinum landscape, Grosshaus is home to senior boys in classes 10 to 12. Across five floors, all rooms in this boarding house are single occupancy with en-suite sinks and shared bathrooms.

The five common rooms all serve individual purposes to accommodate the needs of such a large and diverse group of students. Whether studying, socialising, gaming, or cooking is your interest, there will be a common space in the house for you.

In Grosshaus, our students are preparing for the wider world outside of Lyceum Alpinum. Trust and mutual respect are instilled in our senior boys and these values are cultured accordingly to ensure our students grow to be respectful and mature young men.

This is done through clear expectations, which are followed up on fairly and consistently. The house team works with the boys to help them to understand how to make positive choices and contribute effectively to the community.

Kleinhaus

Like Grosshaus, Kleinhaus is home to boys in grades 10 to 12. Here, students board in double or single rooms. The house provides our students with an environment that encourages the development of strong relationships. The students not only live together but spend their days together in the classroom. They are able to support one another in all aspects of school life.

Active engagement in a range of activities is promoted strongly, and the team in Kleinhaus works hard to ensure that our students participate regularly in sports or activities in school as well as in the surrounding area. This is a great way for our boarders to try new experiences and build new friendships.

‘Project 21’ is a Lyceum Alpinum tradition that is unique to Kleinhaus students where all the boarders take on the challenge of the Engadin cross-country skiing half marathon. Whether they have skied previously or not, through their weeks of training together the boys learn a new skill, support one another, and achieve something with their peers. This gives our boarders a shared experience that we hope strengthens their relationships, in turn building their resilience at this crucial time in their education.





Spencer House

Spencer House is home to our youngest boys in grades 7 to 9. In Spencer House, it is important to start our students off on their journey at the Lyceum Alpinum on the best footing. The dedicated pastoral team works closely with the boys to ensure that they establish positive routines, actively engage in a range of activities available to them and learn how to support one another as they find themselves away from home for the first time.

Dedicated time for supervised study halls throughout the week allows this focus on personal organisation to filter into their approach to academic life.

The students in Spencer House mostly board in double rooms. Rooms are carefully selected to allow all boarders the opportunity to share with other students from different cultures in order to develop new and exciting friendships. Single rooms, where available, are offered to students in grade 9. Outside of their rooms, the boys have two common rooms and a communal kitchen in which to socialise. Free time is spent wisely, and the boarders are encouraged to take part in weekly activities to build friendships, nurture their talents and hobbies, and strengthen their sense of community and teamwork.

Chesa Urezza

Chesa Urezza, named after the neighbouring valley of Val Urezza, is one of our two senior girls houses, home to students in classes 10 to 12. It is a modern, spacious and bright house, and allows our senior girls the perfect setting to tackle the most important years in their education so far. The rooms in the house are single or twin rooms, all with en-suite bathrooms and individual workstations.

Two large common rooms provide a communal space for students to cook, socialise, work and relax, and the in-house gym gives the girls a safe environment to exercise, whatever the weather.

Chesa Urezza is a caring and nurturing environment where girls can feel safe and happy. Student wellbeing is a responsibility pursued tirelessly by every member of the house team and the girls know they always have a place to go should they need support or advice. The ethos of the house promotes independence, personal responsibility and allows our senior girls the space to grow into strong, confident, and self-assured young women, ready to take on life after the Lyceum Alpinum.





Chesa Arpiglia

Chesa Arpiglia, is our second girls senior house and home to students in classes 10 to 12. It is the only boarding house where every room is front facing, meaning that all the girls in Chesa Arpiglia can experience the spectacular mountain views that define our valley from the comfort of their rooms. Students board in both single or twin rooms, with en-suite bathrooms. The house has three large common rooms offering defined spaces to cook, bake, read, socialise, relax or watch films. The Chesa Arpiglia gym provides a quiet space for our more active students to exercise away from the main school facilities.

The team in Chesa Arpiglia devote their time to encouraging active involvement in all that the school and the valley has to offer, nurturing the talents and hobbies of the girls in their care through regular structured activities. These provide the perfect space for the girls to try new experiences and build friendships. The heartfelt supervision and support helps our girls to mature within a warm and caring home away from home.

Chesa Crasta

Chesa Crasta, our junior girls house, is home to students in classes 7 to 9. Students board in twin rooms, with en-suite shower and sink. The double room set-up allows them to develop new friendships with students from different cultures and nationalities.

The dedicated pastoral team creates a nurturing environment and is a great source of support for our younger boarders, many of whom are experiencing being away from home for the first time.

The team ensures to stimulate students to explore their individual talents and interests, planning free-time and weekend activities accordingly. Lending a kind and empathetic ear to all girls in their care, the boarding team ensures that all children receive the support and attention they need and deserve, creating a warm and loving home away from home.

The house has a large common room offering defined spaces to cook, bake, read, socialise, relax or watch films, supporting the community spirit and mutual support and friendship.





International
**Summer
Camp**

**SPEND AN
UNFORGETTABLE SUMMER**

- Learn languages or coding skills
- Make friends from near and far
- Challenge yourself
- Enjoy a wealth of activities

SUMMER CAMP JULY/AUGUST

Age 10 — 16 years

JUNIOR DAY CAMP JULY/AUGUST

Age 6 — 9 years

INFORMATION & REGISTRATION



+41 81 851 31 00
admission@lyceum-alpinum.ch
www.lyceum-alpinum.ch/summercamp





Application

Registration



www.lyceum-alpinum.ch/apply

Or contact us on

+41 81 851 31 00

admission@lyceum-alpinum.ch

Application deadline

Rolling admission,
subject to availability
School visits possible

Entry requirements

Admission test in English
and Maths or German and
Maths, oral interview

Application fees

CHF 1,600 (one-time registration fee)

CHF 16,000 (refundable deposit,
payable upon receipt of offer)

Total annual main fees

Boarding CHF 92,800 - 113,900

Day Students IGCSE/IBDP
CHF 55,300 - 64,700



First-Class Education



Global & Local



Spectacular at 1750 m



Safe & Secure



Multilingual



Lyceum Alpinum Zuoz
SWISS INTERNATIONAL BOARDING SCHOOL

CH-7524 Zuoz, Schweiz

Tel +41 81 851 30 00

admission@lyceum-alpinum.ch

www.lyceum-alpinum.ch

